

candice OLSON  
OUTDOOR



CENTURY®





"From the first rays of spring sunshine to the last long sultry days of summer, there's nothing better for the body and soul than time spent outdoors. This, my first Outdoor Collection for Century, reflects my Canadian roots and attitude towards outdoor living where the season is fleeting and every moment spent outdoors is one meant to be savored and lived to the fullest!"

When I think of outdoor living I envision the beauty, comfort and everyday elegance of my interiors blended perfectly with the outdoors. In fact, I see this collection as one that looks, feels and functions as beautifully in the garden, patio or terrace as the living, family or sun room. These pieces are designed to migrate indoors and out not based on the season but on your own personal needs and whims.

You will see in this collection the soul of the past reinvented in a casually contemporary way that emphasizes comfort and function. Classic architectural motifs are stylized and modernized to bring a fresh yet familiar character to occasional and dining tables. Seating features lines and silhouettes that are edited and refined yet deliciously comfortable. Jewel-like accent pieces rendered with unique finishes, textures and fabrications bring an element of unexpected luxury. The end result? A collection that is fresh yet familiar, current yet timeless and designed with function, durability, and practicality at the forefront.

*Century*

My goal with this collection is to provide the essential ingredients to live as luxurious and comfortable a life outdoors as one does indoors—no matter what the season!"



candice OLSON  
OUTDOOR  
*for* CENTURY®



Table of Contents

UPHOLSTERY	2-5
DINING	6-9
OCCASIONAL	10-13



# UPHOLSTERY











Back view

**D36-22 Oasis Sofa**

W 88 D 35 H 35.5

Inside: W 81.5 D 22 H 16.5

Seat H 19 | Arm H 25

Upholstery with a Marine-Grade Plywood Frame

Shown with two extra Throw Pillows



Back view

**D36-22-SC Oasis Sofa Slipcover**

W 88 D 35 H 35.5

Slipcover with Laced Panels



**D36-70 Luna Chaise**

W 32.5 D 78 H 38.5

Inside: W 28 D 50 H 24.5

Seat H 14 | Arm H 21.5

Natural Teak with Champagne Woven Resin



**Also available: D36-70-PAD Luna Chaise Upholstered Pad  
(Shown on D36-70 Luna Chaise)**

W 27 D 78

Shown with extra Bolster Pillow



Back view



Side view

Fully reclined D 79 | Seat H 14





**D36-10 Palladian Lounge Chair**

W 30 D 35 H 35

Inside: W 26.5 D 22.5 H 15

Seat H 20 | Arm H 22

Natural Teak with Soft Iron finish Aluminum



Back view



**D36-12 Luna Lounge Chair**

W 28.5 D 28 H 38.5

Inside: W 22.25 D 19 H 20.5

Seat H 18 | Arm H 25.5

Natural Teak with Champagne Woven Resin



Back view



Side view



**D36-14 Oasis Lounge Chair**

W 31.5 D 35 H 35.5

Inside: W 24 D 22 H 16.5

Seat H 19 | Arm H 25

Upholstery with a Marine-Grade Plywood Frame



Back view



Back view of Slipcover



**D36-14-SC Oasis Lounge Chair Slipcover**

W 31.5 D 35 H 35.5

Slipcover with Laced Panel

Also available:

**D36-16 Oasis Swivel Lounge Chair**

W 31.5 D 35 H 35.5

Inside: W 24 D 22 H 16.5

Seat H 19 | Arm H 25

Upholstery with a Marine-Grade Plywood Frame

Shown above with slip cover

Also Available:

**D36-16-SC Oasis Lounge Chair Slipcover**

W 31.5 D 35 H 35.5

Slipcover with Laced Panel



**D36-31 Oasis Ottoman**

W 26 D 26 H 19

Upholstery with a Marine Grade Frame



**Also Available: D36-31-SC Oasis Ottoman Slipcover**

W 26 D 26 H 19

Slipcover only



# DINING











**D36-94T Orion Round Dining Table Top**

W 54.25 D 54.25 H 2  
Orion Pearlized composite finish  
Waxed Orion cast composite

**D36-91B Orion Pedestal Base**

W 23.75 D 23.75 H 28.5  
Soft Iron frame finish  
Cast composite



**D36-91T Orion Square Dining Table Top**

W 54 D 54 H 1.5  
Natural Teak

**D36-91B Orion Pedestal Base**

W 23.75 D 23.75 H 28.5  
Soft Iron frame finish  
Cast composite





**D36-87 Palladian Console Table**

W 56 D 18 H 34.75

Natural Teak with  
Powder Coated Aluminum  
Soft Iron frame finish



**D36-89 Palladian Drink Cart**

W 44.75 D 24.25 H 33.75

Natural Teak with  
Powder Coated Aluminum  
Soft Iron frame finish



Back view



Side view

**D36-54 Luna Dining Chair**

W 25.5 D 25.5 H 40.5

Inside: W 19.25 D 19.25 H 22

Seat H 18.5 | Arm H 25.5

Natural Teak with Champagne Woven Resin



Back view



Side view

**D36-57 Luna Bar Stool**

W 22.5 D 22 H 47.75

Inside: W 16.25 D 17.5 H 17.5

Seat H 30 | Arm H 37.5

Natural Teak with Champagne Woven Resin



# OCCASIONAL



D36-83S and D36-83G  
shown bunched



**D36-83S**  
**Crescent Bunching Cocktail Table**  
W 24 D 19 H 18  
Retreat Steel finish  
Powder Coated Aluminum



**D36-83G**  
**Crescent Bunching Cocktail Table**  
W 24 D 19 H 18  
Adrift Glint finish  
Powder Coated Aluminum





**D36-84C Halo Accent Table  
with Croc Insert**  
W 20 D 20 H 24  
Antique Brass finish | Powder Coated Aluminum  
Textured cast composite top



**D36-86 Palladian Cocktail Table**  
W 50 D 30 H 18.5  
Natural Teak with  
Powder Coated Aluminum  
Soft Iron frame finish



**D36-82 Palladian Side Table**  
W 24 D 24 H 24.5  
Natural Teak with  
Powder Coated Aluminum  
Soft Iron frame finish



**D36-87 Palladian Console Table**  
W 56 D 18 H 34.75  
Natural Teak with  
Powder Coated Aluminum  
Soft Iron frame finish





Shown above: D36-46 Trove Bench





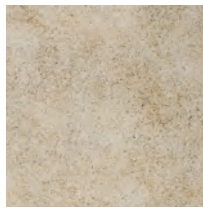
**D36-46 Trove Bench**  
 W 49 D 19 H 19  
 Sandstone Pearlized frame finish  
 Cast composite



Natural Teak



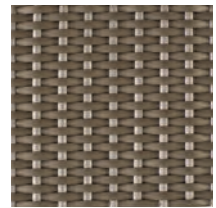
Soft Iron



Orion Pearlized



Sandstone  
 Pearlized



Champagne  
 Woven Resin

## CANDICE OLSON DESIGN ELEMENTS

---

- Built and finished like quality indoor furniture, but designed and engineered to perform beautifully for full-time outdoor exposure with routine maintenance.
  - This collection features a unique mix of materials, including natural teak, soft iron aluminum, and an all-weather woven resin material.
  - Fully upholstered items are made of a marine-grade plywood frame with stainless steel staples for weather resistance throughout. Slipcovers for the sofa and chair feature a laced back panel creating a couture detail.
  - Cast composite materials in various shades are used to create durable outdoor surfaces for dining table bases and tops, as well as occasional items.
  - Century's innovative Driluxe cushions on all seating are constructed of water-repellent covers surrounding a high-resiliency foam core, and wrapped with 100% polyester fiber which is compliant with CAL 117 flame retardant standards.
  - A superior selection of Sunbrella® brand performance to complement all collections are woven from 100% solution-dyed, UV stable acrylic fibers that resist fading, deterioration, and mildew.
-



---

## CENTURY FURNITURE

---

Infinite Possibilities. Unlimited Attention.®

[CenturyFurniture.com](http://CenturyFurniture.com)

P.O. Box 608 | Hickory, NC 28603  
Main Office: 828.328.1851 | Customer Service Fax: 828.326.8224

KD/MPG/3.5K/8-I5

Century® is a registered trademark of Century Furniture LLC.  
©2015 Century Furniture.

